



T8000 Thermal Printer

Powerful • Reliable • Proven

The T8000 is the premier high-end thermal printer.

With unmatched reliability and durability in demanding industrial applications, easy to use, and 100% verifiable output, the workhorse printer designed to keep printing in tough environments where other printers can't survive.

Product Benefits

- High performance ARM Cortex-A9
- 512MB RAM / 128MB Flash Memory
- 4", 6", and 8" model configurations
- Available in 203 DPI and 300 DPI
- Die-cast aluminum frame w/metal door
- Dual motor ribbon drive system
- Transfer and direct printing
- Standard Ethernet, USB, and serial interfaces
- Optional Wi-Fi 802.11a/b/g/n/ac
- Enterprise level Ethernet and Wi-Fi security
- 4-32 GB SD memory card capability
- Premium Asian and Andale font support



Easy-to-Use

- Intuitive printer setup, print quality, and self-help wizards
- Large full color display panel with easy to use navigation keys
- Easily accessible side media loading
- Seamless integration with the most extensive library of print emulations in the industry, including Postscript/PDF printing
- Quick Change Memory Card (option) stores printer configuration and network settings for easy installation of new printers



Industrial Performance

- High print speed CPU and expanded memory enables fast time to first print and high print speeds
- High volume printing up to 15,000 labels per day in demanding environments
- Rugged all metal cabinet design for 24/7 operation in the harshest environments for the most demanding global customers
- PrintNet Enterprise robust remote printer management software included
- Compatibility with SOTI Connect device management solution



Verifiable Output

- Eliminate compliance fines and chargebacks with integrated barcode verifier to produce 100% scannable 1D and 2D barcodes every time
- Fully integrated solution with the ability to retract, void, and reprint labels with bad barcodes automatically
- Automatic capture of grading reports that can be used for defending chargeback and regulatory audits
- Up to 4" scan width, compatible with 4" and 6" printer models

Rugged design with industry-leading system integration and remote management solutions, including the ability to print in sub-zero temperatures without a heated enclosure.

Connectivity Anywhere

- Experience unrestrained networking power anywhere in your enterprise
- Extensive communication options to connect into your environment
- Robust networking capabilities including the latest security protocols
- State of the art dual band 802.11a/b/g/n/ac Wi-Fi with support for the latest encryption and authentication security

Extensive Print Language

- Support for all major thermal printer languages enables seamless plug and play
- First to offer Postscript / PDF printing on a thermal printer
- Integrates with all major ERP systems such as SAP and Oracle

Harsh Environment

- Operates in the toughest production and warehouse environments
- Robust enclosure design protects against the normal knocks and bumps
- Resilient against environmental dirt and grime
- Tested to work at temperatures down to -5° C and up to +40° C

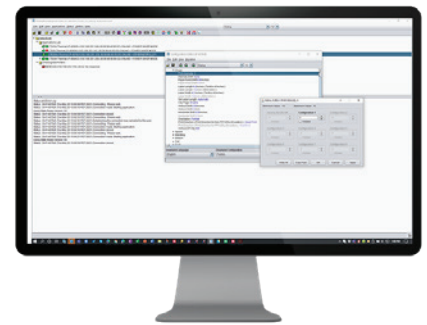
Remote Printer Management

- Full feature PrintNet Enterprise remote worldwide printer management tool
- Check status, get email and text alerts, push firmware updates, remote diagnostics
- Includes virtual control panel to configure the printer as if it was next to you
- Fully compatible with SOTI Connect IoT cloud / on-premise EMM platform

Exclusive Solutions



Barcode Verifier (T8000 ODV-2D)



PrintNet Enterprise

Key Features

3.4" Color Display Panel with Easy Navigation

Energy Star Certified

Full Metal Enclosure with Friction Side Hinges for Safety

Easy-to-Replace "Tool-Less" Snap-in Printhead

Large Side Window for Better Viewing of Supply Status

Standard Serial, USB and 10/100 BaseT Ethernet

Easy Side Loading of Media and Supports Up to 625m Ribbons

T8000 | Data Sheet

| Model | T8000 4" | T8000 6" | T8000 8" |
|------------------------------------|---|--|---|
| Resolution | 203 DPI or 300 DPI | | |
| Printing method | Direct Thermal and Transfer Thermal | | |
| Max. print speed | 14ips@203dpi, 12ips@300dpi | 12ips@203dpi, 10ips@300dpi | 10ips@203dpi, 8ips@300dpi |
| Max. print width | 4.1" (104 mm) | 6.6" (168 mm) | 8.5" (216 mm) |
| Media type | Roll or Fan-Fold Labels, Tags, Paper, Film, Tickets | | |
| Media handling | Standard: Continuous, Tear-Off Strip, Tear-Off / Options: Peel-Off, Cut, and Rewind | | |
| Media width | Min 1" (25.4 mm) / Max 4.5" (114.3 mm) | Min 2" (50.8 mm) / Max 6.8" (172.7 mm) | Min 3" (76.2 mm) / Max 8.75" (222.2 mm) |
| Media thickness | 0.0025" (0.00635 mm) to 0.010" (0.254 mm) | | |
| Media length | 99" (2,515 mm) | | |
| Media core diameter | 1.5" (38.1 mm) - 3.0" (76.2 mm) | | |
| Media max. roll diameter | 8.0" (209 mm) | | |
| Ribbon type | Wax, Wax/Resin, Resin | | |
| Ribbon width | Min 1" (25.4 mm) / Max 4.5" (114.3 mm) | Min 2" (50.8 mm) / Max 6.8" (172.7 mm) | Min 3" (76.2 mm) / Max 8.75" (222.2 mm) |
| Ribbon length | 2050.5 ft (625 m) | | |
| Ribbon core diameter | 1.0" (25.4 mm) | | |
| Interface I/O | Standard: Serial RS232, USB, and Ethernet 10/100Base T Optional: Wi-Fi 802.11a/b/g/n/ac, GPIO, Parallel | | |
| WiFi security encryption | WEP 40/128bit, WPA Personal (PSK), WPA2 Personal (PSK) Enterprise (AES CCMP) | | |
| WiFi security authentication | EAP-TLS, EAP-TTLS, PEAPv0/MS-CHAPv2, PEAPv1, EAP-MDS, LEAP | | |
| Remote management software | PrintNet Enterprise Suite SOTI Connect: IoT device management | | |
| Memory | 128 MB Flash / 512 MB DDR | | |
| Line input | Auto Range 90 - 264 VAC (48 - 62 Hz) | | |
| Fonts | Font Technologies: Intellifont, TrueType, Unicode Standard Fonts: OCR-A, OCR-B, Courier, Letter Gothic, CG Times, CG Triumvirate/Bold/Condensed Asian Fonts (Optional SD card): Simplified Chinese, Japanese, and Korean Andale Fonts (Optional SD card): Simplified Chinese, Traditional Chinese, Korean, Japanese PDF/ PostScript Level 3: 35 fonts | | |
| Graphic formats | PCX, TIFF, BMP, PNG | | |
| Barcode | 1D barcode: BC-412, Code 11, Code 39, Code 35, Code 93, Codabar, Code128 Subsets A/B/C, Industrial 2 of 5, Interleave 2 of 5, German I-2/5, EAN-8, EAN-13, UCC/EAN-128, UPC-A, UPC-E, UPCSHIP, UPS 11, MSI, Matrix 2 of 5, PLESSEY, POSTNET, 4-state PostBar, Australian 4-state, FIM, ITF14, TELEPEN, PLANET, USPS Intelligent Mail, LOGMARS 2D barcode: PDF-417, MicroPDF-417, Maxicode, DataMatrix, QR Codes, Aztec, GS1 Databar (RSS-14) | | |
| Printer language | IGP: PGL/VGL/ZGL/TGL/IGL/STGL/DGL/IEGL/MGL/EGL Job Control: P.JL, and PTX-SETUP Optional: IPDS, TN5250, Postscript (Level 1.3) / PDF (Level 1.7) PXML printer status and real-time label information for integration into third party software | | |
| ODV-2D Integrated Barcode Verifier | Fully integrated barcode verifier grades and reports all 1D and 2D barcodes on every label, any orthogonal orientation Grading based on ISO 15415, 15416 and 15426 standards Full backup and overstrike of labels with bad barcodes Job grading reports | | |
| Operating environment | Operating Temperature: 23° to 104°F (-5° to 40°C) (limitations based on selected media) Operating Humidity: 20-85% Non-Condensing Storage Temperature: 23° to 140° F (-5° to 60° C) Storage Humidity: 5 to 85% Non-Condensing | | |
| Regulatory compliances | Emissions: FCC, CE, CCC Safety: cTUVus, CE, EAC, SABS, RCM, CCC, KC, S-MARK, NOM Environmental: RoHS, WEEE, Energy Star 3.0 | | |
| Physical dimension (W x H x D) | 11.7" (297.2 mm) x 13" (330.2 mm) x 20.5" (520.7 mm) | 13.4" (340.4 mm) x 13" (330.2 mm) x 20.5" (520.7 mm) | 15.4" (391.2 mm) x 13" (330.2 mm) x 20.5" (520.7 mm) |
| Weight | 37 lbs (16.7 kg) | 40 lbs (18.1 kg) | 43 lbs (19.5 kg) |
| Options & Accessories | Wi-Fi 802.11a/b/g/n/ac Parallel GPIO TN5250 PDF/PostScript | IPDS ODV-2D Integrated Barcode Verifier Batch Rewind 4"/6"/8" Peel & Present 4"/6"/8" Heavy Duty Cutter 4"/6"/8" | Premium Asian Font Cards Premium Andale Font Cards QCMC (SD Quick Change Memory Card) |



Global Headquarters

9F, No. 95, Minquan Road, Xindian District
New Taipei City, Taiwan 231
Office: +886 2 2218 6789

EMEA

Georg-Wimmer-Ring 8b
85604 Zorneding, Germany
Office: +49 8106 37979 000

Americas

3040 Saturn Street, Suite 200
Brea, CA 92821 U.S.A.
Office: +1 657 258 0808